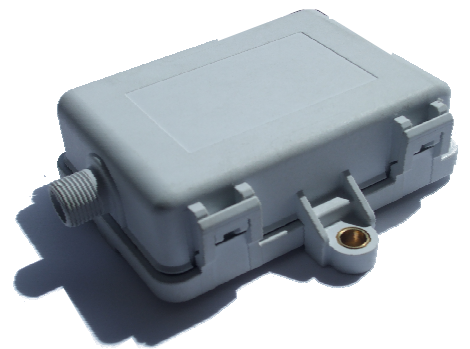




# T8 Mini

Document Revision: V1.3

## Rugged Outdoor Telematics Platform



The T8 Mini family of telematics products combines fastest time-to-market with an excellent price-performance ratio. It addresses all mobile applications that require accurate positioning and communication based on cost-effective, convenient and secure standard internet protocols. By integrating the antennae as well as the backup battery into a waterproof enclosure, the T8 Mini provides easy installation and use in outdoor environments. The T8 Mini is the first telematics platform integrating the SiRFstarIV GPS technology providing an unprecedented level of performance in asset tracking.



Features	Benefits
Integrated antennas and battery	• Complete
Application implementation support	• Short time-to-market
SiRFstarIV technology	• Industry leading GPS performance
Industrial M12 connector	• Standard interfaces
CE, FCC, PTCRB	• Compliant to worldwide legislation
E-Marking	• Approved for vehicles

## Application areas

Further features include flexible I/O, a wide power supply range with a backup battery, making the T8 Mini ideal for basic and advanced tracking applications. As qualified and certified product with a single standard interface connector, the T8 Mini provides advantages in terms of low system, installation and market entrance cost. With excellent tools and professional support for application implementation to save our customers' investment and know-how, this product is ideally suited for easy integration into existing client and server based back office solutions.

### Major components

GPS receiver	SiRFstarIV
Channels	48
Position accuracy (horizontal)	< 2,5m CEP autonomous
sensitivity	-163dbm (tracking) -148dbm (acquisition - cold)
GSM/GPRS modem	Sagem HiLo NC
Quad-band	850/900/1,800/1,900 MHz
GPRS	Multi-slot Class 10 (4Rx/2Tx) up to 85.6kbps
µ-Controller	STM32 CortexM3 32-bit RISC
SRAM	2MB
Flash	4.5MB

### Power

Input voltage	8 to 32 VDC
Current draw	
Operational	45 mA (typ live tracking) @12V
Sleep mode	3.0 mA (max) @12V
Standby	100 uA (max) from Battery
Power Alarm	External power fail
Battery	Li-ion or Li-Polymer
Capacity	1,700 mAh
Charging	Integrated, SW controlled
Battery Alarm	Low battery voltage
Protection	Reverse polarity protection Overvoltage protection Internal self resetting fuse

### Communications

Protocol	
UDP/IP	User datagram protocol
TCP/IP	Transmission control protocol
SMS	Short message service

### Mechanical (with mounting flanges)

Dimensions	95.0 X 65.0 X 30.0 mm 3.7" X 2.6" X 1.2"
Weight	102g / 3.6 oz (no battery) 142g / 5.0 oz (with battery)

### Environment

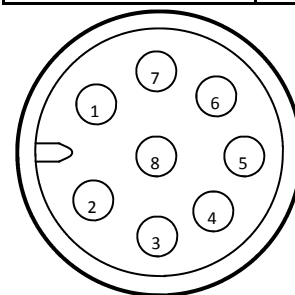
Operational temperature	-40°C to +85°C (no battery) -20°C to +60°C (with battery)
Protection	IP67

### Sensors

Tremble detector	Mechanical
MEMS Accelerometer (±2/8g)	Tri-axis

### Input/Output

Digital inputs (0-30v)	3 (multiplexed)
Digital outputs (500 mA)	2 (multiplexed)
Analog inputs (0-30v 12 bit)	2 (multiplexed)
Serial data (RS232)	1
Dallas / Button interface	1
Connectors	M12, 8 pin, male



View on unit

Pin	Colour	Pin assignment / function
1	Blue	Digital input 2 (ignition)
2	White	RS232-Rx (serial in)
3	Pink	Digital Input, output or analog input 0
4	Yellow	RS232-Tx (serial out)
5	Grey	Button and Dallas input
6	Red	Vin (12/24V Supply)
7	Green	Digital Input, output or analog input 1
8	Brown	GND

## Application Areas

- Transport & Logistics
- Security & Surveillance
- Insurance Rental
- Cars
- Vans
- Trucks
- Trailer Tracking
- Company Car Management
- Private/business Miles
- Taxi
- Bus Fleets
- Motor Homes
- Caravans
- Boats
- Plant Machinery
- Farm Machinery



The information provided herein is believed to be reliable at time of print. TrakM8 assumes no responsibility for inaccuracies or omission. TrakM8 assumes no responsibility for the use of this information, and all such information shall be entirely at the users own risk. Prices and specifications are subject to change without notice. TrakM8 does not authorize or warrant any of its products for use in life support devices and/or systems.